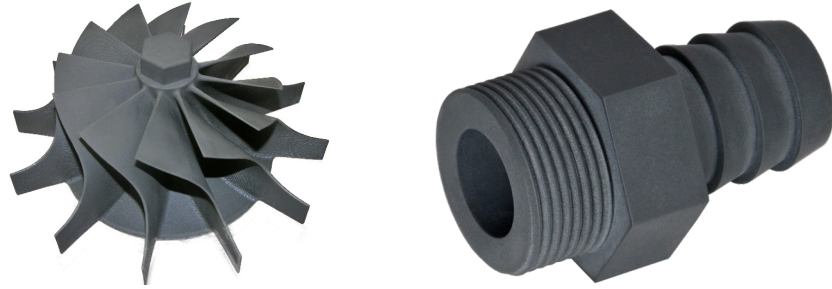


Pro Gray

Let us print your part!¹



EnvisionTEC Pro Gray is an accurate and functional resin for producing robust and durable parts. Pro Gray is a liquid, photo-reactive acrylate with a wide processing latitude, which is used to produce parts with high quality up-facing and down-facing surfaces. The parts exhibit superior fatigue strength properties and excellent tolerance to a broad temperature and humidity range during and after build. The material offers distinguished chemical resistance and a good balance of properties between rigidity and functionality. It is ideal for creating master patterns in rubber molding applications and is suitable for electrical housings, medical products, snap-fit parts, consumer products and automotive applications.

Material Properties ²		
Method	Description	Value
DIN 1342-2	Viscosity	643.1 cP
DIN EN ISO 527-1	Tensile Strength	49.7 MPa
DIN EN ISO 527-1	Elongation at Break	5.24%
DIN EN ISO 178	Elongation at Yield	7.93%
DIN EN ISO 178	Flexural Strength	79.7 MPa
DIN EN ISO 178	Flexural Modulus	1960 MPa
DIN ISO 1183-1	Density	1.215 g/cm ³
DIN EN ISO 180	Izod Impact - Notched	5.05 kJ/m ²
DIN EN ISO 868	Hardness (Shore D)	89 Shore
DIN 53765	Glass Transmission Temperature	120°C - 150°C
E381-00	C.T.E. -40°C - 0°C	55 - 63 µm/m*K
E381-00	C.T.E. 0°C - 50°C	88 - 94 µm/m*K
E381-00	C.T.E. 50°C - 100°C	170 - 189 µm/m*K
E381-00	C.T.E. 100°C - 150°C	192 - 201 µm/m*K
D648-98c	HDT @ 0.46 MPa	84.5 - 102.6°C
C648-98c	HDT @ 1.81 MPa	65.4 - 88.0°C

Recommended 3D Printer Family³

Perfactory Family

¹ Learn more at [EnvisionTEC.com/printmypart](https://www.envisiontec.com/printmypart)

² All data provided is preliminary and must be verified by the individual user

³ May not be suitable for all machine models within a 3D printer family. Please refer to specific model online for compatibility.