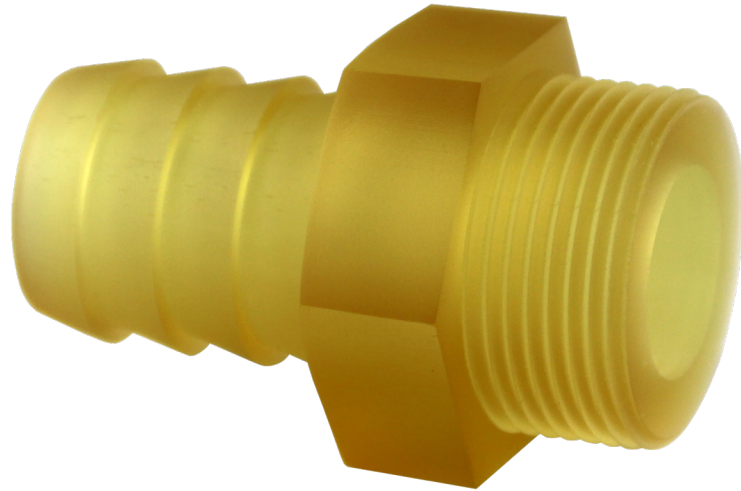


R5-385

Let us
print your
part!¹



R5-385 material is an update on the original R5 material, one of EnvisionTEC’s earliest materials still in use around the world, re-engineered for optimal performance in 3D printers utilizing 385nm wavelength light sources.

R5-385 produces robust, accurate and functional parts with superior chemical and water resistance, a wide processing latitude, and excellent tolerance to a broad range of temperature and humidity fluctuations. Parts built in R5-385 exhibit superior fatigue properties and excellent surface detail as well as impressive stability over long periods of time.

Material Properties ²		
Description	Testing Method	Value
Tensile Strength, MPa	ASTM D 0638	54
Elongation at Break, %	ASTM D 0638	5.0
Tensile Modulus, MPa	ASTM D 0638	2250
Flexural Strength, MPa	ASTM D 0790	90
Flexural Modulus, MPa	ASTM D 0790	2500
Impact, J/m	ASTM D 0256	35
HDT @ 1.82 MPa, °C	ASTM D 0648	54
Hardness, Shore D	ASTM D 2240	85
Viscosity, cP @30°C		395

Recommended 3D Printer Family ³
Perfactory Family, Desktop Family, cDLM Family

¹ Learn more at EnvisionTEC.com/printmypart

² All data provided is preliminary and must be verified by the individual user

³ May not be suitable for all machine models within a 3D printer family. Please refer to specific model online for compatibility.